

USER GUIDE

Overview

Leaderboard

0:50:26

Next mark: 873m Finish: 1899m

#	sail	name	after	kts
1	195222	Martin EVANS	0m	4.5
2	193781	Stuart GODWIN	40m	4.3
3	194878	Eifion MON	80m	4.5
4	197679	Alex MILLS BARTON	81m	4.9
5	195988	Robert HOLMES	151m	4.2
6	195021	Phill REYNOLDS	159m	4.1
7	195199	Andrew BROWN	168m	4.3
8	191103	Michael CLARK	184m	4.3
9	197367	George SPEDDING	194m	4.7
10	197310	Stephen BECKETT	219m	4.5
11	195131	Robin ELSEY	242m	4.3

TracTrac allows you to see tracking of your favourite sailing events – LIVE and in replay. Enter www.tracrac.com, click your favourite event and a screen similar to the one below will appear.

(NB: live tracking requires Java. Free download at www.java.com).

- **Zoom** by using the scroll-wheel on the mouse and pan by dragging the map with the mouse.
- **Locate a specific boat** on the map by clicking on it in the leaderboard.
- Mouse-over a boat will give you name and additional information related to the boat.
- Mouse-click on a boat will lock the **focus** on the boat.
- Press '**replay**' in the box in the lower left corner to replay.
- Press '**analysis**' in the box in the lower left corner to get access to a range of performance information of the participants.

The active leaderboard shows the real-time ranking of the competitors, with the leading competitor at the top. The column "after" shows distance after in meters, "speed" in knots and "name" is the identification of the competitor. You can sort the table according to each column.

Get more from your tracking – additional features

How far are they?

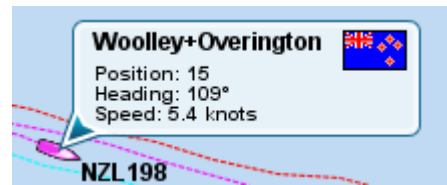
The race clock shows the race time and the progress bar shows the progress of the leading boat relative to the marks specifying the distance to next mark and to the finish.

0:50:26

Next mark: 873m Finish: 1899m

Who's on the boat?

By holding your mouse over a boat you can see who's on the boat, check the standing, see the precise heading and reveal the precise speed over ground.



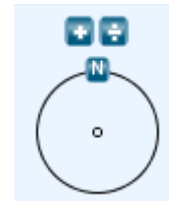
Larger area for tracking

Minimize overview map or the leaderboard to get more room for the tracking.




Turn map

Use turn wheel to turn the map i.e. according to the sailing direction.

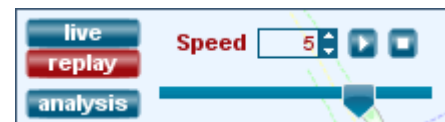


Zoom

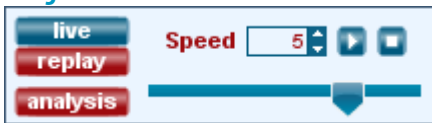
Increase or decrease zoom by pressing 

Replay

Click the replay-button and the play-button to watch the race from the beginning. Select a **specific time** with the sliding bar. Try increasing or decreasing the **speed**.





Performance data



By on 'analysis' you can bring up a list of performance data for each boat on each leg. You can sort the table according to each column.

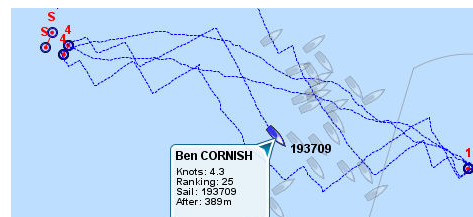
Analysis										
2/7 Y-Mark 1										
Pos	Name	Short	After	Leg pos	Leg time	SO/G	VMG	Top speed	Sailed dist	
1	Robert HOLMES	195988	+0:00	1	14:31	4,5	3,4	5,1	2017m	
2	Alex MILLS BARTON	197679	+0:01	2	14:32	4,5	3,4	5,4	2029m	
3	Martin EVANS	195222	+0:04	3	14:35	4,6	3,4	5,8	2080m	
4	Stuart GODWIN	193781	+0:12	4	14:43	4,8	3,4	5,1	2172m	
5	Phill REYNOLDS	195021	+0:18	5	14:49	4,5	3,3	5,5	2058m	
6	Eifion MON	194878	+0:21	6	14:52	4,7	3,3	5,0	2164m	
7	Michael CLARK	191103	+0:21	7	14:52	4,5	3,3	5,0	2049m	
8	Andrew BROWN	195199	+0:33	8	15:04	4,4	3,3	5,1	2054m	
9	Harry HARDING	185703	+0:43	9	15:14	4,6	3,2	5,8	2142m	
10	James SPENCER	187491	+0:45	10	15:16	4,5	3,2	5,0	2141m	
11	Jak CORNTHWAITE	188474	+0:48	11	15:19	4,3	3,2	4,9	2020m	
12	Tom RAINEY	192542	+0:48	12	15:19	4,5	3,2	4,7	2105m	
13	Michael RIVERS	195836	+1:00	13	15:31	4,4	3,2	5,3	2104m	
14	Shane TERRY	174442	+1:03	14	15:34	4,5	3,2	5,2	2170m	

Use  and  to switch between legs.

View the complete track for a boat

Double-click on a boat in the leaderboard to see the entire track for the boat.

Simply double-click again to return to normal.



See a selection of boats

Click 'Selection' and add the boats that you want to follow. The other boats of the fleet will be greyed out. You can toggle between 'All' and 'Selection' without losing your selection.



Questions or comments? Please write to info@tracrac.com